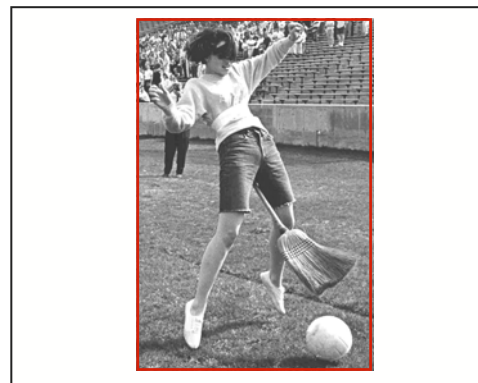




LAMAR UNIVERSITY ARCHIVES

Forget everything you ever thought about the Lamar University Archives and Special Collections. These are not just for aged scholars squinting through their reading glasses at dusty pages. The archives are overflowing with information about the University and work of students, faculty, and staff. The Archives keep the memory of Lamar University. Students can add power and punch to their papers, for example, by looking up a back issue of *University Press*, by digitizing a historic rendition of our beloved Cardinal mascot, or by adding an unpublished fact to their research that may only be in the archives.

In addition to University records, the Archives also house Special Collections of books and manuscripts focusing on the geographic areas of Beaumont and Southeast Texas. Its collections are comprised of old and rare books, fine press publications, manuscripts, maps, photographs, negatives, film, and other handwritten or printed material.



Archives materials, like this photo from Sigma Chi Derby Day 1965, illustrate the history of Lamar.

Using the University Archives allows you to have a greater range of knowledge about almost everything that concerns Lamar University. Knowing about this great resource could come in handy when the crunch is on to demonstrate your ability to produce truly unique scholarship by using primary sources.

(Continued on page 3)

LEARN TO USE THE LIBRARY

Are your students using inappropriate sources in their research papers? Do they think the Internet is the only way to research? Let us help!

A librarian can show your students where to find and how to use appropriate printed and online research tools, how to distinguish between popular and scholarly information, and other important research techniques. According to student evaluations conducted after library instruction sessions last semester, well over ninety percent of the students of all levels found library instruction useful.

If you are interested in arranging a library instruction session for your class, please contact Karen Nichols at 880-8131 or by e-mail at nichols@library.lamar.edu. A week's notice is sufficient, but be aware that there is some competition for the library's classrooms.

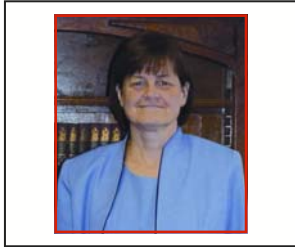
Library instruction sessions may be arranged for any class or student group. New faculty members are especially encouraged to arrange sessions for themselves to become more familiar with the resources available to them and to their students through the Library. Longstanding faculty are also invited to arrange sessions if they would like to refresh their knowledge of research tools.

Jeff Lacy,
Electronic Services Librarian

INSIDE THIS ISSUE:

<i>From the Dean</i>	2
<i>New Staff</i>	4
<i>In Brief</i>	4
<i>Events</i>	5
<i>Government Documents</i>	6
<i>Electronic Resources</i>	7

FROM THE DEAN



Dr. Christina Baum
Dean of Library Services

My work as the first Dean of Library Services at Lamar University began on May 3, 2004. Lamar is a great place to be; the campus is ripe with possibility and optimism. I have come at a very fitting time. There is great opportunity to build upon an already solid program, dedicated to meeting the educational and informational needs of its students and faculty. I would like to share my vision for the Mary and John Gray Library with you.

The Library will offer high quality, uniform access to information resources and services in support of changing academic programs. We will continue to improve information technology by upgrading hardware and software. We will optimize access to web resources and we will implement innovative methods of delivering instruction. My vision also includes a new, state-of-the-art bibliographic instruction classroom that is so desperately needed for teaching our students library research methods and lifelong learning skills. I would like to establish assessment and feedback methods to discern user satisfaction with library services, resources, and programs. We need to know what we are doing right and in what areas we need to improve.

The Library will emphasize its role as a key information provider through collaboration both on and off campus. I would like to see the Library expand its consortial efforts with other Texas State University Sys-

tem libraries to achieve greater efficiency and expanded access in the delivery of information resources to our users. I want to in-

“Lamar is a great place to be; the campus is ripe with possibility and optimism.”

crease the visibility of the Library through the development of a public relations program and the promotion of our resources and services. We have already begun by reinventing our newsletter and we look forward to redesigning our website. We will also continue with our "Gray Library Presents" lecture series this Fall (keep November 8th in mind!). I also want to see

our library improve its outreach to the public by encouraging the local community to take advantage of our resources, our services, and our Special Collections and Archives.

Finally, I plan for the library to provide more accessible, efficient, and inviting physical facilities. Some areas of the library are in need of immediate renovations and I believe we can improve the overall aesthetics of the building as well.

There is potentially no end to the contribution the Mary and John Gray Library can make to the education of our students and the intellectual life of the campus. All the pieces are in place: I have a wonderful, dedicated staff, a supportive campus administration, and a lot of determination.

I am empowered and ready to get started!

Christina Baum is the first Dean of Library Services at Lamar University. She most recently worked as the Director of Library Services at the University of Wisconsin-River Falls for fourteen years. Dr. Baum has twenty-five years of experience in academic library administration. She has a B.S. in Elementary Education from Illinois State University, an M.S. in Library Science, and an Ed.D. in Higher Education Administration from the University of Kentucky. She loves college basketball and is looking forward to the upcoming season.

“Libraries are not made; they grow.”

– Augustine Birrell (1850 – 1933)

British politician

IN THE LIBRARY

CALENDAR OF EVENTS

09/28/2004 **1:30pm – 3:30pm**

Workshop: Tracking Legislative History on the Internet
See article below for details and reservations.

10/05/2004 **1:30pm – 3:30pm**

Workshop: Tracking Federal Regulations on the Internet
See article below for details and reservations.

11/26/2004 **1:30pm – 3:00pm**

Workshop: Locating Census Data on the Internet
See article below for details and reservations.

11/04/2004 **Reception 12:30pm; Program 1:00pm**

Staff Awards Reception
University Reception Center: 8th floor of the library
For more information, call (409) 880-8060

11/08/2004 **7:00pm**

Gray Library Lecture Series: Bonnie Anderson, author of *NEWS FLASH: JOURNALISM, INFOTAINMENT, AND THE BOTTOM-LINE BUSINESS OF BROADCAST NEWS* (2004), is a 27-year news veteran who has won seven Emmy Awards and been a finalist for the Pulitzer Prize. She spent ten years at NBC and close to ten years at CNN. Her new book is a passionate call for a renewed commitment to responsible broadcast journalism.
University Reception Center: 8th floor of the library



11/12/2004 **5:00pm – 10:00pm**

McNair Scholar's Research Symposium
University Reception Center: 8th floor of the library
For more information, call (409) 212-8023

GOVERNMENT DOCUMENTS TRAINING SESSIONS

Have you ever wanted to know what legislation is under consideration in Congress or how your representative voted on a bill? Maybe you need to know the latest changes in the OSHA regulations or where to find current or historical population data for Beaumont. Much of this information is right at your fingertips via resources like *GPO Access*, *THOMAS*, and *American Factfinder*. These tools and more will be included in three hands-on training sessions to be held this fall.

Tracking Legislative History on the Internet, September 28: This session will include how to search for

house and senate bills, committee reports, *Congressional Record*, the *Statutes at Large*, and the *United States Code*.

Tracking Federal Regulations on the Internet, October 5: This session will teach users how to find proposed regulations in the *Federal Register*, where to post comments on proposed regulations, and how search for current regulations in the *Code of Federal Regulations* and the *List of Sections Affected*. In addition, users will learn how to locate Executive Orders in the *Federal Register*.

Locating Census Data on the Internet, October 26:

Census resources will include *American Factfinder* and other resources available from the Census Bureau, FedStats, and the Historical Census Data Browser.

All three sessions will be held at Gray Library from 1:30pm – 3:30 pm in room 708-A on the seventh floor. Sessions are limited to twenty

participants so reservations are required. Please contact Theresa Storey, Documents/Reference Librarian at 880-2135 or via e-mail at storey@library.lamar.edu for reservations or more information.

Theresa Storey,
Documents Librarian

ELECTRONIC DOCUMENT DELIVERY NOW AVAILABLE

Document Delivery is now available to your desktop. If you provide an e-mail address on an Interlibrary Loan Request Form, articles or any materials that are normally received in a photocopied format will be delivered to your e-mail. Interlibrary Loan Request Forms can be found at the Refer-

ence Desk on the first floor of the library and on our website at <http://library.lamar.edu>.

Please address questions about this service to the Interlibrary Loan Department at ill@library.lamar.edu or call 409-880-8987.

PRESIDENTIAL ELECTION 2004



Government Documents News

“Here are a few resources that offer current and historical information about political parties candidates, and the election process.”

The conventions are over and soon it will be November 2, Election Day. Here are a few resources that offer current and historical information about political parties, candidates, and the election process. Check the inset for the Internet addresses for the web sites mentioned below.

The **Electoral College** process can be confusing. However, the U.S. Electoral College site coordinated by the National Archives Office of the Federal Register provides a wide selection of information about elections past and present. The site offers answers to frequently asked questions, the Electoral College procedural guide, and the electoral allocations based upon the 2000 Census. Historical data includes electoral votes by party, candidate, and state for each election since 1789. Those who want to try their hand at predicting the outcome of the election should check out the Electoral College Calculator available on this site.

Another site that explains the election process is the **Ben’s Guide to U.S. Government for Kids**. The election process is described in different sections for grades 3-5, 6-8, and 9-12. Each section offers more detail than the previous.

The **Federal Election Commission** was created in 1975 to administer the Federal Election Campaign Act, which governs the financing of federal elections. A section titled “Elections and

Voting” on the Commission’s web site offers information on the Electoral College, voter registration, historical election voter turnout data, election process, primaries and caucuses, and the administrative structure of federal elections. The site also includes the new National Voter Registration Form.

The **Office of the Clerk** of the U.S. House of Representatives also offers useful

information about congressional elections. The Congressional History section includes historical data about roll call votes from 1990 to date, party profiles, congressional apportionment, party divisions, leadership, and historical legislation.

For political party information see the web sites of the Democratic National Committee and the Republi-

(Continued on page 7)

Election Information Web Sites

United States Electoral College

http://www.archives.gov/federal_register/electoral_college/

Ben’s Guide to U. S. Government for Kids

<http://bensguide.gpo.gov/>

Federal Election Commission

<http://www.fec.gov>

F.E.C. Elections and Voting

<http://www.fec.gov/elections.html>

Office of the Clerk of the U.S. House of Representatives

<http://clerk.house.gov>

Congressional History

http://clerk.house.gov/histHigh/Congressional_History/index.html

Democratic National Committee

<http://www.democrats.org>

Republican National Committee

<http://www.rnc.org>

National Voter Registration Form

<http://www.fec.gov/voteregis/vr.htm>

Voter Registration Address Change – Texas

<http://www.texasonline.state.tx.us/NASApp/sos/SOSACManager>

Request for Voter Registration Applications – Texas

<http://www.sos.state.tx.us/elections/voter/reqvr.shtml>

FEATURING THE ALTERNATIVE PRESS INDEX

The Gray Library subscribes to several online indexes that contain references to publications of all kinds: newspaper articles, magazine articles, professional and academic journals, books, reports, conference proceedings, and more. Users may access these indexes via the "Find Articles and More" link on our homepage (<http://library.lamar.edu>). Students seem to gravitate to particular indexes while others, sadly, get neglected.

For example, most English 1301 students find *Academic Search Premier* and *Research Library* useful for finding information on current events and controversial topics. We librarians direct students to these indexes in particular because both contain references to thousands of magazines and newspapers on a wealth of topics going back several years. Both indexes also provide many articles in "full text," which allows students to read, print, or download articles online. All in all,

they are both excellent research indexes.

They have a minor flaw in coverage, however. Although few of the more popular "alternative" magazines, such as *Mother Jones* and *Utne Reader* are included, these indexes primarily cover mainstream publications. Where can one go for references to lesser-known publications such as *Anarchist Studies*, *Feminism Review*, *Freethought Today*, *The Green Guide*, *Hinduism Today*, *The Journal of Progressive Human Services*, or *Vegetarian Voice*?

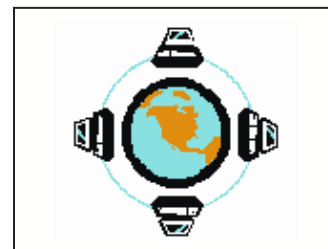
Fortunately, the Library subscribes to the *Alternative Press Index* and the *Alternative Press Index Archive*, which contain references to these publications and about 250 more. These indexes are excellent sources for any research topic related to cultural and social studies, current events, economics, and political science.

The *Alternative Press Index* has references going back to 1991. The *Alterna-*

tive Press Archive covers the years of 1969 – 1990. These indexes cover radical and leftist newspapers, magazines, and scholarly journals. A complete list of publications covered in the *Index* is online at <http://www.altpress.org/direct.html>. The *Index* contains no full text articles, so the articles listed in the *Index* have to be found in the Library or ordered through an interlibrary loan request. Please contact or visit the Reference Desk on the first floor of the Library for more information or assistance.

The *Alternative Press Index* is a publication of the Alternative Press Center. Their website (<http://www.altpress.org/>) contains more information about the *Index*, an online directory to the publications listed, and links to over 425 alternative websites arranged by name and category.

Jeff Lacy,
Electronic Services
Librarian



Online Resources News

"The Alternative Press Index is an excellent source for any topic related to cultural and social studies, current events, economics, and political science."

ELECTION 2004

(Continued from page 6)

can National Committee. In addition, most candidates have their own web sites.

Registering To Vote

Anyone who wants to vote in the upcoming election must be registered before October 4th. The National Voter Registration Form is available from the Federal Election Commission's web site.

Residents of Texas can fill out and print the form available on the Texas Secretary of State's site and mail it to a local voter registration official. For more information, inquire at the reference desk on the first floor of the Gray Library.

Theresa Storey,
Documents Librarian

From the Stacks Fall 2004 Vol 2, #1

Co-editors:

Theresa Storey
Jeff Lacy

Newsletter Committee:

Theresa Storey, chair
Christina Baum
Ramona Hutchinson
Jeff Lacy
Royce McGuire
Kim Wiley



LAMAR UNIVERSITY

A Member of The Texas State University System

Mary and John Gray Library
 Lamar University
 4400 MLK Boulevard
 P. O. Box 10021
 Beaumont, TX 77710
 Phone: 409-880-1898
 Fax: 409-880-2218

We're on the web at
<http://library.lamar.edu>

Visit your Library!

*“. . . to have many books,
 and never to use them, is
 like a child that will
 have a candle burning by
 him all the while he is
 sleeping.”*

**Henry Peacham,
 The Compleat Gentleman
 (1622)**



LIBRARY HOURS—FALL 2004

Regular Hours

Monday through Thursday	7:30am – 12:00mid
Friday	7:30am – 6:00pm
Saturday	10:00am – 7:00pm
Sunday	2:00pm – 12:00mid

Archives/Special Collection Hours

Monday through Thursday	9:00am – 6:00pm
Friday	8:00am – 5:00pm

Special Hours

Labor Day	September 6	Closed
Thanksgiving Break	November 25 – 27	Closed
Finals Week	December 7 – 9	7:00am – 1:00am
	December 10	7:00am – 6:00pm
	December 11	10:00am – 7:00pm
	December 12	2:00pm – 1:00am
	December 13	7:00am – 1:00am
Intersession	December 14	7:00am – 6:00pm
	December 15 – 16	7:30am – 9:00pm
	December 17	7:30am – 6:00pm
Winter Graduation	December 18	Closed
Intersession, cont.	December 19	2:00pm – 9:00pm
	December 20 – 23	7:30am – 9:00pm
Christmas Break	December 24 – January 2	Closed
Intersession, cont.	January 3 – 6	7:00am – 9:00pm
	January 7	7:30am – 6:00pm
	January 8	10:00am – 7:00pm
	January 9	2:00pm – 9:00pm
	January 10	7:30pm – 9:00pm